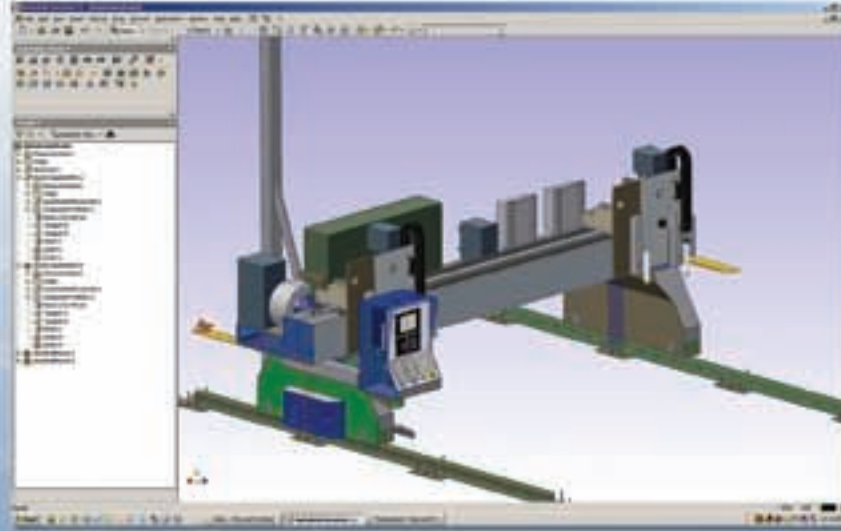


## The Pinnacle Advantage



### 3D modeling software used to develop each machine project

#### Advantage:

- Customer can customize the machine design to optimize floor space.
- Assists customer when reviewing employee safety.
- Assists customer when reviewing material handling issues.
- Produces detailed manufacturing drawings that insure consistent quality and reliable delivery dates.
- Produces detailed installation drawings that insure a smooth turnkey machine installation.

### Comprehensive operator and general maintenance training

#### Advantage:

- Optimizes machine performance.
- Maximizes consumable life.
- Optimizes cut quality.

### Partnership with world leaders in the field of expertise

#### Advantage:

- Wide range of technical support.
- Large distribution network for parts.

### Partners

Hypertherm Inc.  
Hypertherm Automation Inc.  
CMC Burny  
Linatrol  
Yaskawa  
Kaliburn  
MTC

### Other products and services

- Variety of machine models available
- Water tables
- Dowlraft tables
- Water table and dowlraft table drawing packages
- Dust collection systems

- Programming and nesting software
- Machine retrofits and rebuilds
- Preventative maintenance programs
- Training programs
- Service

### Pinnacle Industrial Automation Inc.

15 Winer Road (Aberfoyle)  
Guelph, Ontario N1H 6H9  
Phone : (519) 766 0567  
Fax : (519) 766 0568  
Toll Free : 1 888 208 2450  
<http://www.pinnacle-ia.com>



### DISTRIBUTED BY:



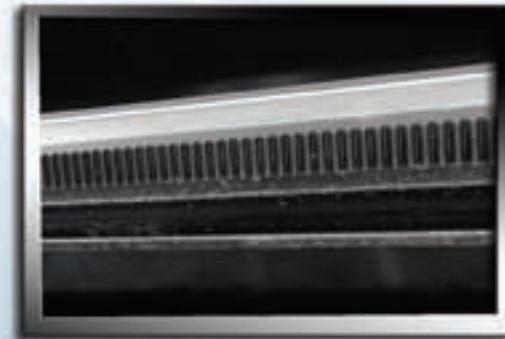
# WHISTLER LT





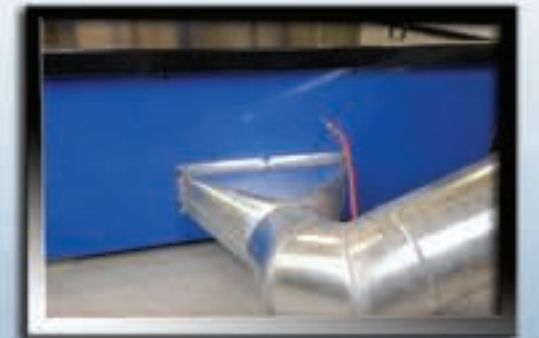
#### Station Carriage

- Dual "V" rails across bridge allows for smooth, precise motion of station carriage with minimal maintenance.
- Station cable / hose track provides protection from cutting / piercing environment.
- Hypertherm PHC lifter is integrated directly to Edge Ti CNC controller which includes a magnetic breakaway to protect torch during torch collisions.
- HSD130 is the standard plasma cutting system used which has a production cutting capacity of 1" with a tolerance of +/- 1/32".



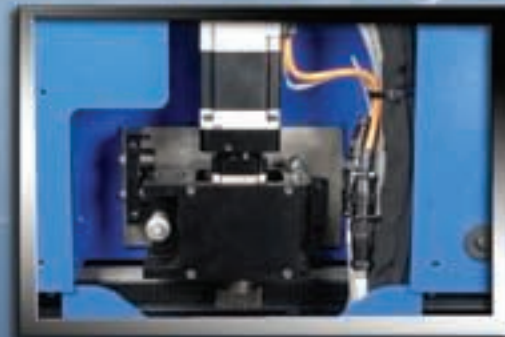
#### Machined Elevator Guide Rail

- Machined surface (8 lb/ft).
- 16 pitch / 20 degree PA black oxide rack (off-the-shelf).



#### Dust Collection

- Dwindraft table is ready for dust collector hook-up at back end of table.
- Dust collector and duct work can be provided by Pinnacle at additional cost.
- Quick disconnect air supply port for damper operation.



#### Drive Assembly

- Brushless servo motor (amplifier built-in to CNC controller).
- Motor directly coupled to high precision planetary gearbox.
- Spring loaded drive bracket engagement.
- Standard off-the-shelf pinion gear.



#### Table Zone

- Dwindraft table zoned.
- Air cylinder operated damper door is controlled by CNC (no air switch activation).
- A smaller CFM dust collector can be used due to size of zones.



#### Hypertherm Edge Ti CNC controller

- Windows XP operating system.
- Full cut loss / power loss recovery.
- Standard shape library.
- 15" Touch screen display.
- 4 axis servo control (3 for machine motion, 1 for PHC).
- 4 integrated servo amplifiers.
- Direct connection to HSD130 power supply (no extra interface wiring / cables).
- Integrated Sensor PHC torch height control.
- Serial or Networking for easy program downloading



#### Safety Labeling

# WHISTLER LT

6 x 12 cutting area

The Whistler LT is a full featured integrated table for a smaller shop environment. The design criteria for this machine was a reliable and productive cutting machine which utilized state of the art cutting technology offered at a very attractive price tag. This compact, unitized machine is driven by dual brushless motors with precision gear heads, providing a very stable and precise cutting platform. Powered by Hypertherm's Edge Ti CNC with touch screen interface, this controller operates on the familiar Windows XP Embedded operating system. This full featured 4 axis controller integrates all drive amplifiers for machine motion, the Hypertherm Sensor PHC automatic arc voltage height control, and the Hypertherm HSD130 plasma cutting system, greatly reducing cabling requirements. The unitized table construction comes complete with levellers for quick and easy installation, a 1.25" thick steel capacity, and a zoned dwindraft table. Easily removable slat frames and slats allow for easy cleaning and small part access. This multi-featured machine produces quality cut parts at an entry level price tag.