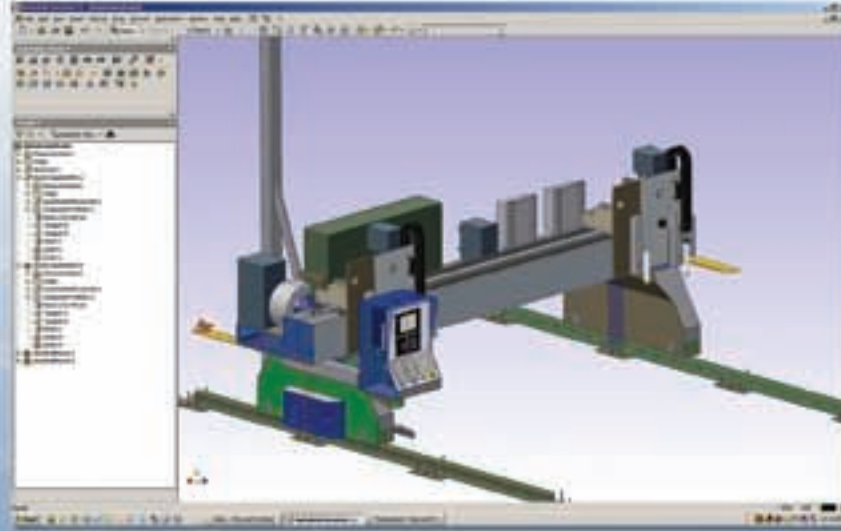


The Pinnacle Advantage



3D modeling software used to develop each machine project

Advantage:

- Customer can customize the machine design to optimize floor space.
- Assists customer when reviewing employee safety.
- Assists customer when reviewing material handling issues.
- Produces detailed manufacturing drawings that insure consistent quality and reliable delivery dates.
- Produces detailed installation drawings that insure a smooth turnkey machine installation.

Comprehensive operator and general maintenance training

Advantage:

- Optimizes machine performance.
- Maximizes consumable life.
- Optimizes cut quality.

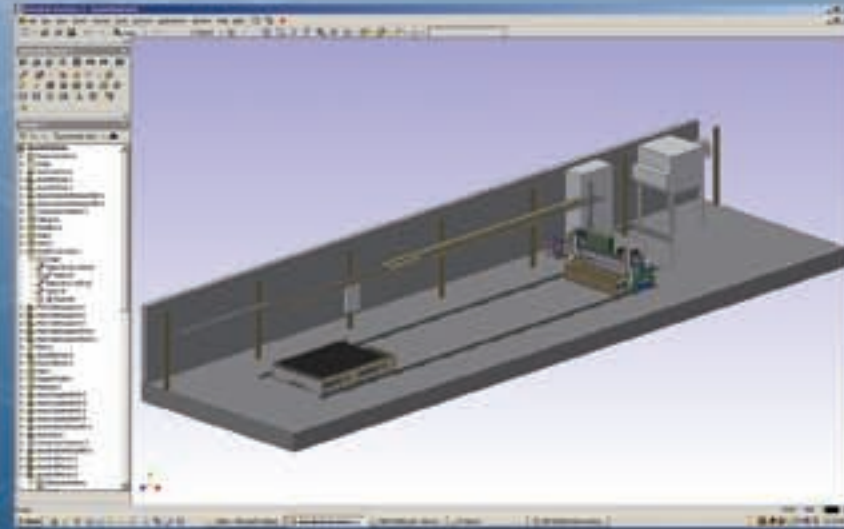
Partnership with world leaders in the field of expertise

Advantage:

- Wide range of technical support.
- Large distribution network for parts.

Partners

Hypertherm Inc.
Hypertherm Automation Inc.
CMC Burny
Linatrol
Yaskawa
Kaliburn
MTC



Other products and services

- Variety of machine models available
- Water tables
- Downdraft tables
- Water table and downdraft table drawing packages
- Dust collection systems

- Programming and nesting software
- Machine retrofits and rebuilds
- Preventative maintenance programs
- Training programs
- Service

Pinnacle Industrial Automation Inc.

15 Winer Road (Aberfoyle)
Guelph, Ontario N1H 6H9
Phone : (519) 766 0567
Fax : (519) 766 0568
Toll Free : 1 888 208 2450
<http://www.pinnacle-ia.com>



DISTRIBUTED BY:



SHAPE WIZARD DSG





AC Brushless Drive Assembly

- High precision low backlash planetary gear boxes.
- Direct motor to gearbox coupling (no belts or pulleys).
- Spring drive engagement system.
- Rack and pinion drive in all axis.



Electrical Cabinet

- Fully labeled components & wires.
- UL / CUL / CSA approved components.
- Conforms to category II / III E-stop circuit using safety monitoring relay and safety contactor.
- 3 axis AC brushless drive package.
- Main power disconnect switch on cabinet door.



Machined Guide Rail

- 8 ft. & 16 ft. sections
- Machined surface for mounting of rack.
- Raised pedestal or floor mounted option.
- Adjustable pedestal for leveling of rails.
- Tongue & Groove rail for precise end to end alignment.
- 24 lb. machined rail.
- Large diameter hardened wheels for smooth motion.
- Rail & wheel scrapers.
- 16 pitch / 20 degree PA black oxide rack.



Multiple Stations with Optional Multi-Processes

Cutting process:

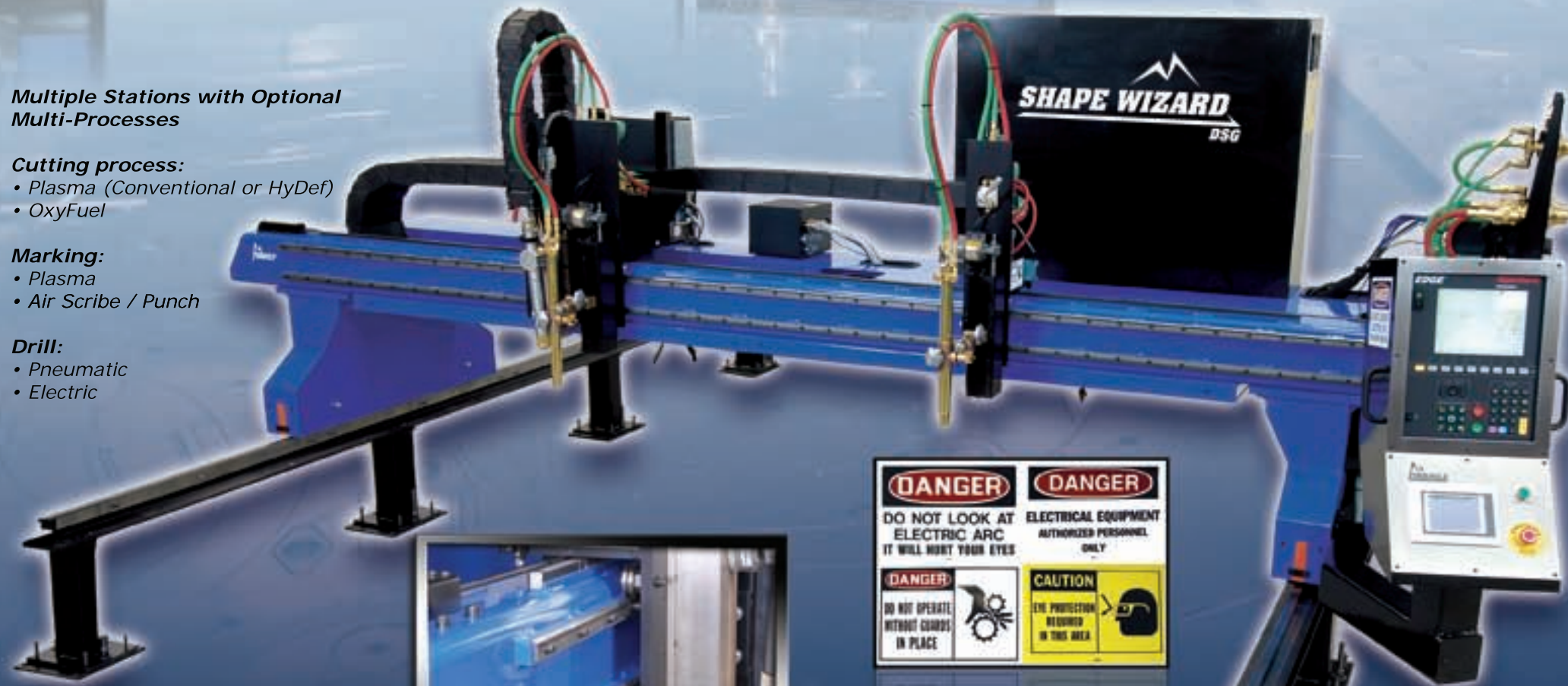
- Plasma (Conventional or HyDef)
- OxyFuel

Marking:

- Plasma
- Air Scribe / Punch

Drill:

- Pneumatic
- Electric



Safety Beam Package (Optional)

- Prevents the machine from making contact with the operator or material handlers while machine is in operation.
- Drive power for all axis is removed when safety beam is interrupted.
- Safety beam protects both front & back of the machine.



Safety Labeling



V-rail / Wheels for Cross Axis

- Provides smooth accurate motion.
- V-wheels are durable & long lasting.
- Standard off the shelf wheels & rails.



CNC / Operators Console

- Windows based CNC.
- Full cut loss recovery.
- Full power loss recovery.
- Built in shape library.

Touch Panel Operator Interface

- Cutting process selection.
- Plasma height control interface.

E-stop & Power On Reset



Floor Mounting Optional

SHAPE WIZARD DSG

The Shape Wizard DSG (Dual Sided Gantry) is a medium to heavy duty machine designed to provide a reliable, precise and highly productive solution at a competitive price. Using dual drive technology, this machine offers greater stability and repeatability than the SSG. Its precision machined dual "V" rails and rigid steel frame combined with powerful AC servo drives and low backlash gear boxes offer unprecedented accuracy and reliability. The machine's flexible design offers a variety of options and configurations including customer defined cut width and length, station parking, multiple processes and multiple torch stations. A variety of downdraft and water tables are available. This machine will meet the demands of large production environments and limited budgets.